



EL PASO MINERAL AND GEM SOCIETY, Inc.

P.O. Box 31516, El Paso TX 79931

FOUNDED – 1947

Membership Dues are due and payable as of December of each year. Dues are \$12.00 for Adults (18 and Over) and \$4.00 for Juniors. Make check out to EPMGS and mail to PO Box 31516 El Paso TX 79931. Delinquency of over 90 days will result in being removed from the Membership Roster.

Meetings will be held on the 4th Thursday of every month at The Memorial Senior Center, 1800 Byron, El Paso TX at 6:30 PM. Board Meetings will usually be held a half hour prior to the general meeting. The meeting in July is our yearly picnic – the date to be announced.

2010 CLUB OFFICERS

President	Tom Smith	(915)356-8653	Programs	Lorraine Johnson	(915)751-4527
Vice President	Matt Durning	(575)382-4301	3 Year Trustee	Miguel Chrisman	(915)740-0301
Treasurer	Linda Durning	(575)382-4301	2 Year Trustee	Matt Durning	(575)382-4301
Secretary	Marie Murphy	(915)471-1071	1 Year Trustee	Tom Smith	(915)356-8653
Historian	Marty Gaugler	(915)859-6634	Show Chair	Harry Bruntz	(915)345-2415
Editor	Charlie Christensen	(575)640-1203	Assist. Show Chair	Jeanette Carrillo	(915)533-7153
Field Trips	Matt Durning	(575)382-4301	Webmaster	Matt Durning	(575)382-4301
Membership	Charlie Christensen	(575)640-1203	Assist. Webmaster		

THE VOICE

The Voice is the official bulletin of the Society and is published monthly. All articles must be in the editor's possession no later than the Monday following the monthly meeting. Any articles received after that will not be published until the following month. Please note Charlie Christensen's e-mail address: charlieenos@msn.com. Please e-mail articles to be published. Members are encouraged to submit articles for publication. Permission is granted to reprint material from other sources provided that credit is properly cited. Ads are accepted from members for publication at no charge for the sale or exchange of items pertaining to the hobby. **WEBSITE:** Our club now has a website, www.epmgs.org. Any information you would like to see on this website contact Matt Durning at madtex@q.com or call (575)382-4301.

The El Paso Mineral and Gem Society, Inc. is a non-profit organization. The purpose of this Society shall be to increase and disseminate knowledge about minerals and other geologic materials; to encourage mineral study, collecting and fashioning as a hobby; to conduct meeting, lectures, displays, field trips, and to sponsor shows for the general edification of the public.

GENERAL MEETING

The next General Meeting will be 28 January 2010 at 6:30 PM. This is **our night to Install our new Officers, have our first Eatin' Meetin' of the year, and CELEBRATE OUR SOCIETIES 63RD BIRTHDAY.**

SCHOOL BOARD MEETINGS

The School Board Meeting information is posted under School Information and Class Enrollment.

ADDRESS CHANGES

NOTE: Anyone who has a change in mailing address or phone number please send e-mail to Charlie Christensen at charlieenos@msn.com. If, you do not have e-mail capabilities please send notification addressed to EPMGS Membership, PO Box 31516, El Paso TX 79931. Thank you.

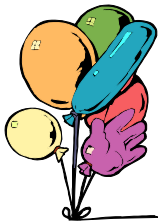
THE VOICE

VOLUME LXI NUMBER 4 JAN 2010



HAPPY NEW YEAR.

Hope you all have a Safe and Fun New Years Eve and may your "New Year" be Great.



WELL WISHES go out to 2 of our members.

Blanca Cedillos who was recently in the Hospital having had serious surgery and is currently at home recovering – Our Prayers and Well Wishes are with you Blanca.

Dorris Brown recently had knee replacement surgery and is now recovering and going through physical therapy – Hope you're up and around soon Dorris.

MEMBER UPDATE:

It's been reported by a reliable source that our long time member, Sid Shepperd, is doing well in California and has actually gained some weight. Anyone that knows Sid knows that this is a wonderful achievement. He has indicated that he would really like to hear from some of you. If you wish to get hold of him please let me know and I'll give you his address and phone number.



BIRTHDAYS & ANNIVERSARIES

For those of you who are celebrating one or both of these occasions in the month of January Happy Birthday and/or Happy Anniversary.

BIRTHSTONE FOR JANUARY – GARNET

Garnet, the birthstone for January, signifies eternal friendship and trust and is the perfect gift for a friend. *Garnet*, derived from the word *granatum*, means seed, and is called so because of the gemstone's resemblance to a pomegranate seed. References to the gemstone dates back to 3100 B.C., when the Egyptians used garnets as inlays in jewelry. *Garnet* is the name of a group of minerals that comes in a rainbow of colors, from the deep red of the pyrope garnet to the vibrant green of tsavorites. Today, the most important sources for garnet are Africa, Sri Lanka, and India. *Source:* <http://www.americangemsociety.org/birthstones.htm#january>

(22 Dec – 20 Jan)

(21 Jan – 19 Feb)



Capricorn
Saturn



Aquarius
Uranus



GENERAL MEETING

The annual Christmas meeting was called to order at 6:30 pm by Vice-President Judy Herd.

There were no minutes from the November meeting as I didn't attend that meeting and Charlie forgot her copy.

The Treasurer's report was given by Linda Durning with a grand total of \$8592.41 so far in the club. Not all the receipts have come in from the show, but here is what she had so far... \$404.00 in membership, \$1295.00 in tickets, \$167.25 in geode cutting, \$161.00 for the Kiddie Corner, \$894.00 from the Silent Auction, \$167.25 from the Pampered Rockhound. The Gem Center brought in \$266.00 for cracking

geodes which was donated to the club.
The field trip for January is set for the 9th. We will be going to Hatch for petrified wood, carnelian, selenite and other specimens. Details will be in the newsletter.

Last month the new officers were nominated – we voted and it was a unanimous vote - Tom Smith will be President, Matt Durning is VP, Marie Murphy is Secretary again, and Linda Durning is Treasurer. We adjourned for a 15 minute break to get eats and then we had our annual Scrooge Christmas Gift Exchange. Ho ho ho
Marie Murphy
Secretary

WELCOME TO OUR NEW MEMBERS

The following people joined our Society at our Annual Gem Show:

Jordan Christensen
Jayni Duke
Marion Harrington
Cheryl Holmes (returning Member)
Sandra Schuman

Hope to see you all at future meetings and/or Field Trips.

HINTS, TIPS, AND STUFF

EDITORS NOTES: The source of these tips, hints, and stuff are other club bulletins. Be careful when trying out any new idea. They have not been tried by this editor.

DON'T FORGET – DUES ARE DUE DEC 2009!! You can pay at the meetings, the school, or mail a check (make payable to EPMGS) to EPMGS, PO Box 31516, El Paso TX 79931.

PROGRAMS - Lorraine Johnson will be conducting programs for our club members. Here's a list of the Programs she will be doing in 2010:

DATE	TITLE
28 Jan 2010	Lapidary Art
25 Feb 2010	Minerals of the Western US
27 May 2010	Fossil Identification
24 Jun 2010	Gold and Turquoise
26 Aug 2010	The Quartz Family and Fluorescence

OFFICER ELECTIONS: The following people have been Elected for office in our Society:

Tom Smith	President
Matt Durning	Vice President
Marie Murphy	Secretary

Linda Durning will remain as Treasurer for another year. Charlie Christensen will remain as Editor and Membership Chairperson for another year. The terms for Treasurer, Editor and Membership end in 2010. Please think about helping the Society out by volunteering to take over these positions – Treasurer, Editor, and Membership, in 2011.

I recently received a copy of The El Paso Parks & Recreation Senior Citizen Centers Monthly Newsletter "The Centurion", Vol 1, Issue 2, Dec 2009. There was an article in there that I want to share with the Membership.

OUR TRUE GIFTS

By Ray Alvarado, Recreation Program Supervisor

When recognizing one's volunteerism, we truly must see not what one is trying to give but the impact that others feel you created for them. I met Redgie Medlock at the Memorial Senior Center some thirteen years ago and what an impression she made.

Since 1979, Redgie has volunteered in the Ceramics Class and the Gem and Mineral programs at Memorial. She was born in Fayette, North Dakota, and served in WWII as a WAC. There she trained our young men how to fly the planes they used to win the war and helped build what many today call this country's greatest generation. Redgie and Jerry Medlock were married in 1946 and had four sons; Gerald, Zack, Bruce, and Ray. She is a straight forward person without any fanfare and a firm handshake. Volunteering with her groups with safety and care, she many times brings lunch for her friends from her Victory Garden.

Redgie has stated a few times that helping people and seeing their faces when creating their first jewelry piece, "is compared to seeing your children walk for the first time". Rose Strong, director of the Memorial Park Senior Center said, "She is as important to this center as the cardio vascular system is to the human body". Knowing Redgie as I do, she is not comfortable with accolades, but this humble volunteer is truly valued by so many of the participants at Memorial Park Senior Center. Julie Belcher states, "Anyone who has spent any time at MSC knows Redgie. She has been an ambassador for this center for many years. She has a wealth of knowledge and is also willing to share it".

This true pioneer woman is one reason the senior center section is always trying to recognize these wonderful, gifted volunteers that give of themselves and enrich our lives. This over 65 year old participant is one we want and need to celebrate.

NOTE FROM EDITOR: I have attached a Tucson Gem Show list to this newsletter. I feel I need to inform some of you – The Tucson Show is **NOT** wholesale only. I've talked to a few people recently who were under the impression that the Show is Wholesale only – it isn't. Granted there are some areas that are Wholesale only but most of the Show is open to the General Public. The list I have attached indicates which areas are Wholesale only, Retail (ie General Public), or a combination of both. It's an awesome show – I highly recommend checking it out.



FIELD TRIPS

Note from Your Field Trip Coordinator: Any and all Clubs and their members are cordially invited to join us on any of our Field Trips. If you need more information call Matt at (575)382-4301 or (915)491-3244 or e-mail madtex@q.com.

**PICK & SHOVEL FIELD TRIP REPORT
JANUARY 2010**

Wow another decade has come and gone, getting older than dirt but loving it. In a short retrospect of my year rock hounding, it was one of my best.

I got to spend my vacation at “Agate Rendezvous 2009”. We went to the Caballo Mountains, Lordsburg, Deming, Columbus, Socorro and even El Paso County to name a few spots. I came home with agates to psilomelane and few things I still have no idea what they are or why I would pick it up. We made the Mineral Symposium at NM Tech and even a rock hounding movie at NMSU. Hey UTEP, where are you!

I also learned that true rock hound friends will load the rock in to your truck that tried to take my thumb off before driving me off to the hospital. It also reminded me that the first aid kit that I carry around on field trips is a pretty good idea.

So we might as well do it again. I'd like to welcome the new members who signed up at our Gem and Mineral Show. Participating in field trips require nothing more than a spirit of curiosity, adventure and a good sense of humor. No experience necessary. Our next field trip will be to Hatch, NM on January 9, 2010 at 8:30am. We will be looking for petrified wood and agates. We will meet just west of I-25 on Rt. 26 (Hatch exit) by the first chili stand on the right. Hope to see you there.

Matt Durning



SCHOOL INFORMATION AND CLASS ENROLLMENT

Call 915-562-4268 for information and to enroll in Lapidary and Jewelry-craft classes. The Instructors are volunteers from the school committee of the Society and are not paid in any way by the Society or the students. If you want to enroll in one of the classes, all you have to do is sign up at the Memorial Park Senior Center which is located at 1800 Byron Street, El Paso TX. It is important that you register early because a minimum of three students is needed for a “Go” with a maximum of six students per class. Sign up well in advance as there are usually waiting lists. Each Class has a \$20 fee plus a Lab Fee and any other material costs. The \$20 fee payment is to be made on the first day of the class to the Senior Center, and the Lab Fee will be paid to your instructor. All other material purchases should be paid for at the time of purchase or delivery.

Active Member Instructors:

Dorris Brown	Francisco Cuevas	Robert Bates	Roger Lopez
Redgie Medlock	Art Moreno	Ken Raab	Greg Berglund
Peggy Fontaine	Liz Kosturakis	Norm Ballou	Ron Anderson

SCHOOL BOARD MEETINGS

Wed Jan 27	Tue Apr 20	Mon Jul 19	Tue Oct 19
Tue Feb 23	Wed May 26	Tue Aug 24	Mon Nov 15
Mon Mar 22	Tue Jun 22	Mon Sep 20	Tue Dec 14

The meetings are all held at noon in the conference room at the Memorial Park Senior Citizens Center. Anybody who wishes to sit in on any of the meetings is welcome. We recommend that you call Rose Strong at the Center first to make sure that the meeting date has not changed. Her number is 915-562-4268.

Class Schedule: (Classes run from 9 AM to 12 Noon unless otherwise noted)

Monday & Wednesday	Lapidary		04 Jan 2010 thru 10 Feb 2010 22 Feb 2010 thru 31 Mar 2010 12 Apr 2010 thru 19 May 2010
Monday & Wednesday	Silversmith	Beginning	04 Jan 2010 thru 10 Feb 2010 12 Apr 2010 thru 19 May 2010 19 Jul 2010 thru 25 Aug 2010
		Advanced	22 Feb 2010 thru 31 Mar 2010 02 Jun 2010 thru 12 Jul 2010 06 Sep 2010 thru 13 Oct 2010
Tuesday & Thursday	Casting, Faceting, & Wirewrap Classes		05 Jan 2010 thru 11 Feb 2010 23 Feb 2010 thru 01 Apr 2010 13 Apr 2010 thru 20 May 2010
Monday thru Friday (see note below)	(NEW) ADVANCED WORKSHOP 12:30 – 3:00 PM		All the time
Friday	Beading		Held from 9 AM to 12 Noon. Fee \$3.00. Bring your own materials.

NOTE: ADVANCED WORKSHOP IS FOR ADVANCED STUDENTS. THERE WILL BE NO MATERIAL SALES DURING THIS WORKSHOP. YOU MUST BRING YOUR OWN MATERIALS.

The shop at the Memorial Senior Center is open for anyone's use on Friday's from 9 AM to 12 Noon. The shop fee for every session is \$3.00 to be paid to the instructor in charge of the Workshop.

SHOW DATES

JANUARY 2010:

1--GLOBE, ARIZONA: 53rd annual show; Gila County Gem & Mineral Society; Gila County Fair Grounds, 3 miles north of Junction US 60-70; Fri. 9-5, Sat. 9-5, Sun. 9-4; adults \$3, students with ID and children with adults free; live demonstrations, door prizes, displays, minerals, jewelry; contact Jim Mills, P.O. Box 487, Miami, AZ 85539, (928) 701-1712; e-mail: oldulking57@hotmail.com

1-10--QUARTZSITE, ARIZONA: Show, "Tyson Wells Rock & Gem Show"; Tyson Wells Enterprises Inc.; Tyson Wells Show Grounds, 100 W. Kuehn St.; 9-5 all days; free admission; contact Kym Scott, P.O. Box 60, Quartzsite, AZ 85346, (928) 927-6364; e-mail: tysonwells@tds.net; Web site: www.tysonwells.com

1-31--LAUGHLIN, NEVADA: Show, "Clouds Jamboree"; Richard Cloud; Avi Resort and Casino - Outdoor RV Park, 10000 Aha Macav Pkwy.; 10-5 every day; contact Richard Cloud, P.O. Box 284, Quartzsite, AZ 85346, (866) 558-7719; e-mail: cloudsjamboree@tds.net; Web site: www.cloudsjamboree.com

8-10--DEL MAR, CALIFORNIA: Show, "Gem Faire"; Gem Faire Inc.; Del Mar Fairgrounds/Exhibit Hall, 2260 Jimmy Durante Blvd.; Fri. 12-7, Sat. 10-6, Sun. 10-5; \$5 weekend pass; contact Yooy Nelson, (503) 252-8300; e-mail: info@gemfaire.com; Web site: www.gemfaire.com

8-10--MESA, ARIZONA: 38th annual show, "A.L. Flagg Gem & Mineral Show"; Mesa Community College, US Hwy. 60 and Dobson Rd.; free admission; Peralta Stones display, more than 100 dealers, local clubs and organizations, displays, free activities for children, kids' egg carton kits; contact Ray Grant, (480) 814-9086; e-mail: raycyn@cox.net; Web sites: www.azminfun.com and www.flaggshow.info

15-17--SANTA ROSA, CALIFORNIA: Show, "Gem Faire"; Gem Faire Inc.; Sonoma County Fairgrounds/Grace Pavilion, 1350 Bennett Valley Rd.; Fri. 12-7, Sat. 10-6, Sun. 10-5; \$5 weekend pass; contact Yooy Nelson, (503) 252-8300; e-mail: info@gemfaire.com; Web site: www.gemfaire.com

16-17--EXETER, CALIFORNIA: Show, "Gemboree"; Tule Gem & Mineral Club; Veteran's Memorial Bldg., Hwy. 65; Sat. 10-5, Sun. 10-4; free admission; dealers, gems, grab bags, club displays, jewelry, rocks, minerals, lapidary supplies, demonstrations, "Wheel of Fortune", door prizes; contact Pepper Okada, 5924 W. Iris Ct., Visalia, CA 93277, (559) 733-5842; e-mail: pepperok@clearwire.net

16-17--FREDERICKSBURG, TEXAS: Show, "Hill Country Gem & Mineral Show"; Fredericksburg Rockhounds; Pioneer Pavilion, Lady Bird Johnson Municipal Park, 1606 S. Hwy. 16, south of downtown Fredericksburg; Sat. 9-6, Sun. 10-5; free admission; Rollin' Rock meeting Sun., hourly door prizes; contact Jeff Smith, 208 Castle Pines Dr., Kerrville, TX 78028, (830) 895-9630; e-mail: jeffbrenda@windstream.net; Web site: www.fredericksburgrockhounds.org

22-24--TYLER, TEXAS: Show, "Gemstone and Jewelry Showcase"; East Texas Gem & Mineral Society; Rose Garden Center, 420 Rose Park Dr.; Fri. 9-5, Sat. 10-6, Sun. 10-5; adults \$3, students \$1; exhibits, demonstrations, fluorescent mineral display, geode cracking, dealers, rocks, minerals, jewelry, fossils, supplies, Wheel of Fortune, silent auction; contact Keith Harmon, 8316 Oxford Dr., Tyler, TX 75703, (903) 581-4068; e-mail: kharmon1219@sbcglobal.net

29-31--SAN RAFAEL, CALIFORNIA: Show, "Gem Faire"; Gem Faire Inc.; Marin Center/Exhibit Hall, 10 Avenue of the Flags; Fri. 12-7, Sat. 10-6, Sun. 10-5; \$5 weekend pass; contact Yooy Nelson, (503) 252-8300; e-mail: info@gemfaire.com; Web site: www.gemfaire.com

JANUARY-FEBRUARY 2010:

1Jan-28Feb--QUARTZSITE, ARIZONA: Wholesale and retail show, "Desert Gardens International Gem & Mineral Show"; Desert Gardens RV Park; 1064 Kuehn Rd., south side of I-10, along frontage road; 9-6 daily; free admission; crystals, minerals, rough, polished, jewelry; contact Sharon or Sandy, Desert Gardens RV Park, 1055 Kuhen St., P.O. Box 2818, Quartzsite, AZ 85346, (928) 927-6361; e-mail: info@desertgardensrvpark.net; Web site: www.desertgardensrvpark.net

DON'T FORGET – THE TUCSON GEM SHOW STARTS 22 JAN 2010 THRU 14 FEB 2010. SEE COMPLETE INFO AT WEBSITE: <http://jewelryshowguide.com>. I have also included a list of the shows.

FOR A MORE COMPLETE LIST OF ALL SHOWS (I ONLY LIST A FEW) GO TO <http://www.rockngem.com/showdates.asp> OR REFER TO A COPY OF ROCK & GEM MAGAZINE.

FOR THOSE INTERESTED IN FOOTBALL I HAVE INCLUDED THE LOGOS FOR THOSE TEAMS THAT HAVE CLINCHED A POSITION IN THE PLAYOFFS.



WHOLESALE GEM & JEWELRY SHOWS

[AGTA GemFair Tucson](#)

What: Primarily high-end loose colored gemstones and pearls, with some finished jewelry; designer jewelry section; colored diamond and estate jewelry pavilions; MJSA jewelry

When: Feb. 2-Feb. 7, 2010

Where: **Tucson Convention Center** — Main entrance on S. Granada Ave.; 260 S. Church St.; (520) 791-4266.

[Gem & Lapidary Dealers Association](#)

What: Gemstones, diamonds,

When: Feb. 1-Feb. 7, 2010

Where: **Starr Pass Marriott Resort & Spa** — Four Miles West of I-10 & Starr Pass Blvd. (22nd St.); 3800 W. Starr Pass Blvd.; (520) 792-3500.

Gem & Lapidary Wholesalers

What: Manufactured jewelry,

Where: **Gem Mall** — I-10 at Palo Verde Rd.; 4475 S. Country Club Rd.

When: Jan. 30-Feb. 12, 2010

[Holiday Inn/Holidome](#) — I-10

When: Feb. 4-Feb. 12, 2010

[Quality Inn \(Grant Rd.\)](#) — I-10 at W. Grant Rd.; 1365 W. Grant Rd.; (520) 622-7791.

When: Jan. 30-Feb. 12, 2010

[Howard Johnson Gem & Mineral Show](#)

What: Jewelry, silver, minerals, gemstones, lapidary, metaphysical objects/art, beads

When: Jan. 29-Feb. 13, 2010

Where: **Howard Johnson** — I-10 & Starr Pass Blvd.; 1010 S. Freeway Ave.; (520) 622-5871.

[GJX Gem & Jewelry Show](#)

What: Gems, gem carvings, designer and fashion jewelry

When: Feb. 2-5, 2010

Where: **Gem & Jewelry Exchange** — Main entrance on S. Granada Ave.; 198 S. Granada Ave.

Jewelry, Gem & Mineral Exposition

What: Manufactured jewelry, gemstones, pearls, silver, lapidary objects, minerals

When: Jan. 30-Feb. 14, 2010

Where:

[JG & M Expo 2010/Michigan St.](#) — One Block West of Palo Verde Rd.; 3300 E. Michigan St.

[JG & M Expo 2010/Simpson St.](#) — Two Blocks Southwest of the Tucson Convention Center; 601 W. Simpson St.

[J.O.G.S. International Exhibits](#)

What: Manufactured jewelry, silver, gems, pearls, lapidary, gem decor, international pavilions

When: Jan. 29-Feb. 10

Where: **Tucson Expo Center** — I-10 & Irvington Rd.; 3750 E. Irvington Rd.; (520) 603-7135.



WHOLESALE MINERAL SHOWS

[1820 Oracle Wholesale Show](#)

What: Minerals

When: Jan. 29-Feb. 14, 2010

Where: **1820 Oracle Wholesale Show (TopGem Warehouse)** — N. Oracle Rd. & Plata St.; 1835-1893 N. 11th Ave.

[Madagascar Minerals™ Gem Show](#)

What: Gems, fossils, minerals, carvings

When: Jan. 21-Feb. 15, 2010

Where: **Norcross-Madagascar Gallery** — W. Lester St. Between Oracle Rd. & Stone Ave.; 201 W. Lester St.; (520) 882-8884.

WHOLESALE & RETAIL GEM & JEWELRY SHOWS

[La Quinta Gem & Mineral Show](#)

What: Jewelry, silver, minerals, gemstones, lapidary, metaphysical objects/art, beads

When: Jan. 29-Feb. 13, 2010

Where: **La Quinta Inn** — I-10 & Starr Pass Blvd. (next to the Howard Johnson); 750 W. Starr Pass Blvd.

[Pueblo Gem & Mineral Show](#)

What: Gems, jewelry, beads, minerals

When: Jan. 30-Feb. 11, 2010

Where: **Riverpark Inn** (formerly Pueblo Inn) — S. Freeway Ave. Between Congress St. & Starr Pass Blvd.; 350 S. Freeway Ave.; (520) 622-6611.

WHOLESALE & RETAIL GEM, MINERAL, & FOSSIL SHOWS

Arizona Mineral & Fossil Shows

What: Minerals, fossils, some gems

When: Jan. 30-Feb. 13, 2010

Where:

[InnSuites Hotel](#) — N. Granada Ave. & St. Mary's Rd.; 475 N. Granada.; (520) 622-3000.

[Mineral & Fossil Marketplace](#) — N. Oracle Rd. & Drachman St.; 1333 N. Oracle Rd.; (520) 624-4018.

[Quality Inn/Benson Hwy.](#) — Between Park Ave. & Ajo Way; 1025 E. Benson Hwy.; (520) 623-7792.

[Ramada Limited](#) — N. Freeway Ave. & St. Mary's Rd.; 665 N. Freeway Ave.; (520) 622-6491.

[Executive Inn Mineral & Fossil Show](#)

What: Minerals, fossils

When: Jan. 30-Feb. 14, 2010

Where: **Best Western Executive Inn** — W. Drachman St. & Oracle Rd.; 333 W. Drachman.; (520) 791-7551.

[Fine Minerals International Gem & Mineral Show](#)

What: Minerals, some gems

When: Jan. 31-Feb. 13, 2010

Where: **Fine Minerals International Gem & Mineral Forum** — N. Granada Ave. & St. Mary's Rd. (Next to the InnSuites Hotel); 450 N. Granada Ave.



[Globe-X Gem & Mineral Show 2010](#)

What: Minerals, fossils, lapidary objects, gems

When: Jan. 29-Feb. 13, 2010

Where: **Days Inn/Convention Center** — S. Freeway Between Congress St. & Starr Pass Blvd.; 222 S. Freeway Ave.; (520) 622-3481.

[Mineral & Fossil Co-op](#)

What: Minerals, fossils

When: Jan. 30-Feb. 13, 2010

Where: **Mineral & Fossil Co-op** —N. Oracle Rd. & Elm St. (Next to the Vagabond Plaza Hotel); 1635 North Oracle Rd.

[Rapa River Gem & Mineral Show](#)

What: Minerals, fossils, some gems

When: Jan. 29-Feb. 14, 2010

Where: **Rapa River** — S. Freeway Ave. Between Congress St. & Starr Pass Blvd.; 292 S. Freeway Ave.

[Tucson Electric Park Gem & Mineral Show](#)

What: Minerals, gems, fossils

When: Jan. 31-Feb. 14, 2010

Where: **Tucson Electric Park/Kino Sports Complex** — E. Ajo Way Between Kino Pkwy. & Country Club Rd.; 2500 E. Ajo Way.

[Tucson Electric Park RV Gem Show](#)

What: Minerals, gems, some jewelry

When: Jan. 30-Feb. 14, 2009

Where: **Tucson Electric Park/Kino Sports Complex** — E. Ajo Way Between Kino Pkwy. & Country Club Rd.; 2500 E. Ajo Way.

[Tucson Gem and Mineral Show™](#)

What: Minerals, gems, fossils

When: Feb. 11-14, 2010

Where: **Tucson Convention Center** — Entrance on Church St. & Granada Ave.; 260 S. Church St.; (520) 791-4101.

[Tucson Showplace](#)

What: Minerals, rough stones, fossils

When: Jan. 29-Feb. 15, 2010

Where: **Tucson Showplace** — S. Freeway Ave. & Starr Pass Blvd.; 1530 S. Freeway Ave.; (520) 620-0007.

[Tucson Westward Look Mineral Show](#)

What: Minerals, some gems

When: Feb. 5-8, 2010

Where: **Westward Look Resort** — A Half-Mile East of Oracle Rd.; 245 East Ina Rd.; (520) 297-1151.

WHOLESALE & RETAIL BEAD SHOWS

[A.B.C. Direct East](#)

What: Beads, bead supplies

When: Jan. 27-Feb. 13, 2010

Where: **A.B.C. Direct East** — One Block West of S. Palo Verde Rd.; 3301 E. Pennsylvania St.

[A.B.C. Direct West](#)

What: Beads, bead supplies

When: Jan. 27-Feb. 13, 2010

Where: **A.B.C. Direct West** — Ft. Lowell Rd. Between First & Stone Ave.; 355 E. Ft. Lowell Rd.

[The Best Bead Show](#)

What: Beads, bead supplies

When: Feb. 3-7, 2010

Where: Kino Veterans Memorial Community Center — E. Ajo Way & Forgeous Ave.; 2805 E. Ajo Way.

[To Bead True Blue](#)

What: Beads, bead supplies, art jewelry, textile arts

When: Jan. 31-Feb. 5, 2010

Where: Doubletree Reid Park — 445 S. Algernon Way.

[Tucson Bead Show](#)

What: Beads, bead supplies, art jewelry, textile arts

When: Feb. 6-8, 2010

Where: Doubletree Reid Park — 445 S. Algernon Way.

[The Whole Bead Show](#)

What: Beads, bead supplies

When: Feb. 3-8, 2010

Where: Windmill Inn — N. Campbell Ave. & River Rd.; 4250 N. Campbell Ave.; (520) 577-0007.

WHOLESALE & RETAIL — Miscellaneous

[African Art Village](#)

What: African art and artifacts

When: Jan. 29-Feb. 14, 2010

Where: African Art Village — I-10 & Starr Pass Blvd.; 1134 S. Farmington Rd.

[American Indian Exposition](#)

What: American Indian artifacts, one-of-a-kind art pieces, crafts, beads

When: Jan. 31-Feb. 14, 2010

Where: Flamingo Hotel — N. Stone Ave. & Drachman St.; 1300 N. Stone Ave.; (520) 770-1910.

[Swarovski Elements - Create Your Style 2010](#)

What: Swarovski crystal components, demonstrations, seminars, additional products

When: Feb. 2-5, 2010

Where: 525 N. Bonita Avenue

[Rio Grande Catalog In Motion](#)

What: Gem- and jewelry-related tools, products, services, demonstrations

When: Feb. 5-8, 2010

Where: Hilton Tucson East — E. Broadway Blvd. & Kolb Rd.; 7600 E. Broadway Blvd.; (520) 721-5600

